

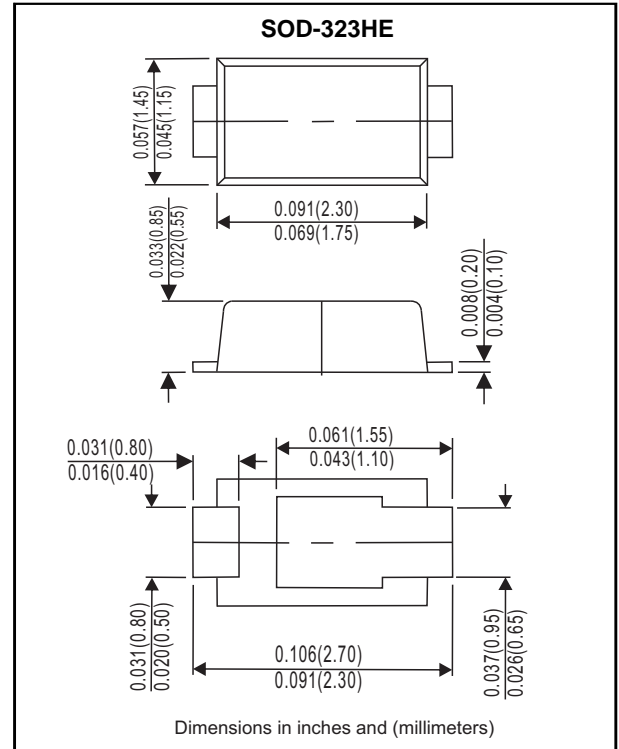
Features

- Trench MOS schottky barrier diode
- Low forward voltage drop
- Low profile
- RoHS compliant
- Compliant to Halogen-free
- Suffix "-Q1" for AEC-Q101

Mechanical data

- Case: SOD-323HE
- Case material: molding compound meets UL 94V-0 flammability rating
- Polarity: color band denotes cathode end

Package outline



Maximum Ratings ($T_A=25^\circ\text{C}$ Unless otherwise specified)

Parameter	Symbol	Value	Unit
Repetitive Peak Reverse Voltage	V_{RRM}	60	V
Average Forward Rectified Current	$I_{F(AV)}$	2	A
Peak Forward Surge Current (8.3 ms single half sine-wave superimposed on rated load)	I_{FSM}	25	A
Operating Junction Temperature Range	T_J	-55 to +150	$^\circ\text{C}$
Storage Temperature Range	T_{STG}	-55 to +150	$^\circ\text{C}$

Electrical Characteristics ($T_A=25^\circ\text{C}$ Unless otherwise specified)

Parameter	Test Conditions	Symbol	Value	Unit
			Max.	
Forward Voltage@ $I_F=2\text{A}$	$T_A=25^\circ\text{C}$	V_F	0.6	V
	$T_A=125^\circ\text{C}$		0.52	
Reverse Current @ V_{RRM}	$T_A=25^\circ\text{C}$	I_R	70	μA
	$T_A=125^\circ\text{C}$		50	mA
Typical Thermal Resistance		$R_{\theta JA}$	450	$^\circ\text{C}/\text{W}$

Rating and characteristic curves

FIG.1: Forward Output Current Derating Curve

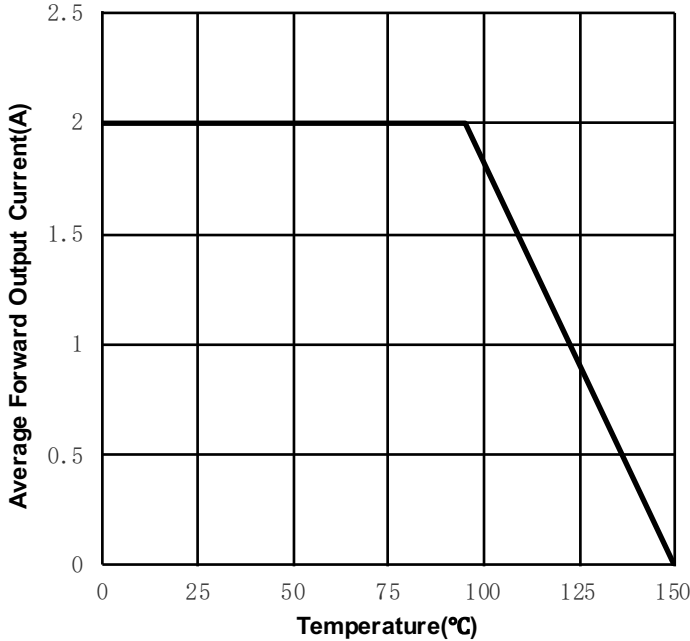


FIG.2: Maximum Non-Repetitive Peak Forward Surge Current

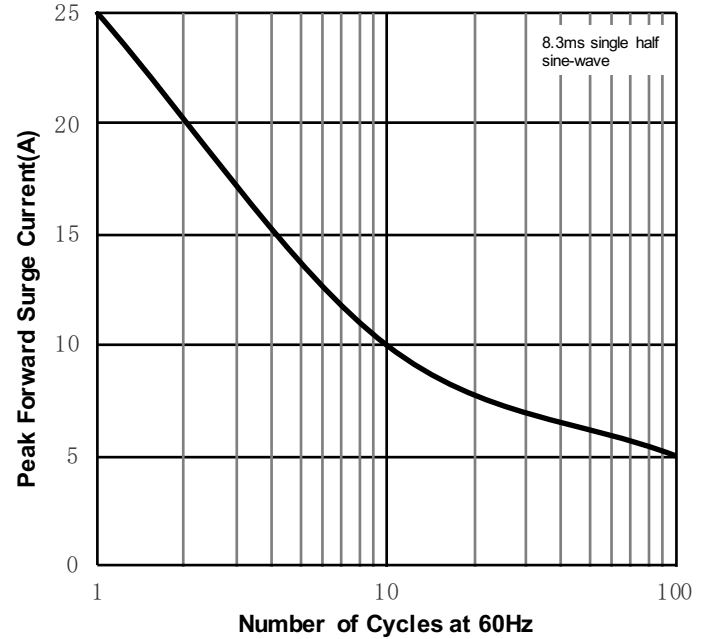


FIG.3: Typical Forward Characteristics

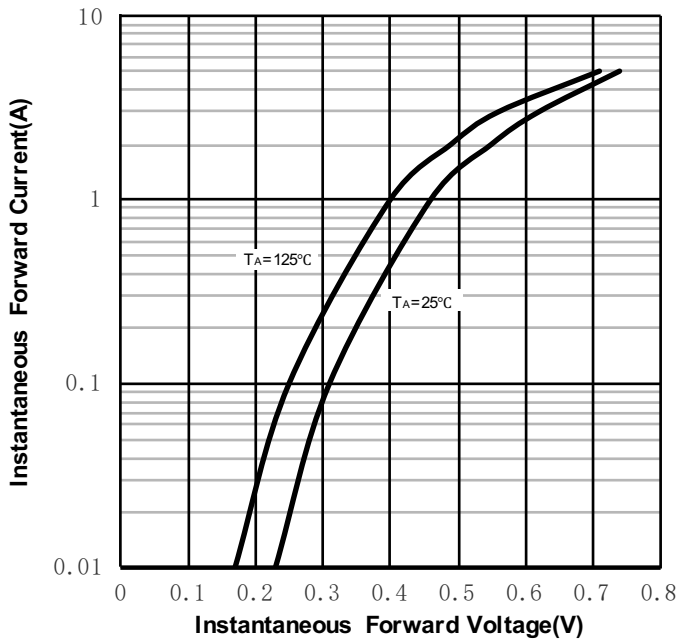
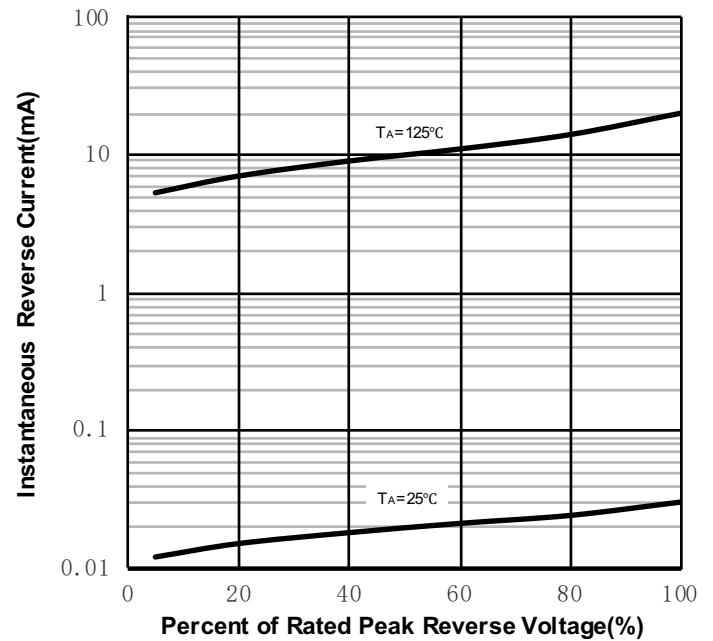




FIG.4: Typical Reverse Characteristics



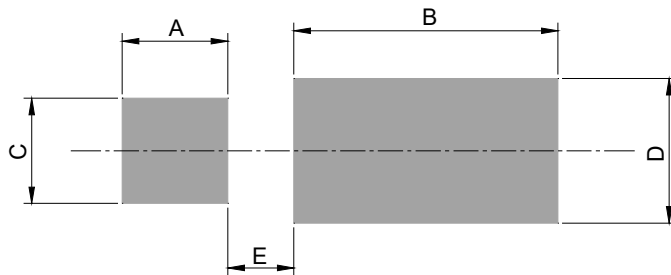
Pinning information

Pin	Simplified outline	Symbol
Uni-Directional Pin1 cathode Pin2 anode		

Marking

Type number	Marking code
SS26-NHT-D-Q1	6E

Suggested solder pad layout



Dimensions in inches and (millimeters)

PACKAGE	A	B	C	D	E
SOD-323HE	0.032 (0.80)	0.079 (2.00)	0.032 (0.80)	0.043 (1.10)	0.020(0.50)